



# Introducing Bella 4

Bella 4 is a 33m wooden yacht with room for up to 22 passengers.

She has 11 spacious cabins, each with a private bathroom, air conditioning, and storage space. It also has a large dining area, upper deck lounge, a sun deck, and a large dive deck. Bella 4 is equipped with all the modern amenities and safety features you need for a relaxing and enjoyable holiday.



2 Twin cabins on main deck  
2 double cabins on upper deck  
6 twin cabins lower deck  
Plus extra twin main deck cabin if needed

Main deck restaurant  
Serving 3 delicious meals a day plus after dive snacks and drinks



Upper deck lounge area, with High Definition TV for dive briefings



# Liveaboard Safety Summary

## Standard Operating Procedures

Safety is our top priority. Our liveaboards all operate according to a Standard Operating Procedure manual (SOP). These standards ensure a consistent experience for all our guests and written instructions and training for staff. The SOP also specifies the safety equipment required and emergency drills. Drills are conducted regularly for staff training. For some drills we may ask you to take part!

## Bella 4 - Liveaboard Safety Summary

DIVING		Notes
Dive Safety Briefing (General)	✓	Conducted before 1 <sup>st</sup> dive
Two Ribs	✓	
High Pressure Compressor for Diving Air	✓	Three compressors
Nitrox System Available	✓	Membrane System
Tanks – Visual & Hydro Inspection	✓	
EMERGENCY		Notes
Emergency Alarm System	✓	Central Alarm System
Fire Drills	✓	
Life Jackets	✓	Muster Station #1, Flybridge
Life Rafts	✓	Two – self deploying w/ hydrostatic releases

FIRE SAFETY		Notes
Public area fire extinguishers	✓	
Public area smoke detectors	✓	

MEDICAL		Notes
AED / Defibrillator	✓	
First Aid Kit	✓	
Emergency Oxygen Kits	✓	2 Portable + 2-350 cu/ft Storage

ROOMS		Notes
Emergency Exits (Lower Deck)	✓	Forward & Aft
Fire Extinguishers	✓	Small unit in each room
Smoke Detectors In Room	✓	Integrated into Central Alarm

GENERAL		Notes
CCTV System	✓	Engine room, Kitchen, Corridors, dive deck
Environmental Care / Sustainability	✓	
Marked Emergency Exits	✓	
Mobile Phone (cellular)	✓	When in range of shoreline
Night Watch	✓	10 PM to 6 AM
Satellite Phone	✓	
Smoking Permitted	✓	In designated areas only
Welcome & Safety Briefing	✓	1 <sup>st</sup> Night
Wi-Fi / Internet / Email	✓	Partial – See cellular

STAFF		Notes
Social Responsibility / Care	✓	
First Aid Training	✓	
Firefighting Training	✓	

YACHT		Notes
Dry Dock Refurb. Program	✓	Every 12 months
Engines	✓	Two main drive engines
Single Side Band Radio	✓	
VHF Radio	✓	Mounted & Handheld
Generators	✓	Two



# Safety Protocols - Bella 4

## Battery Charging

- No charging of personal electronics in the cabins.
- Only charge electronics at the designated charging points.
- Only charge lithium-ion batteries at outside charging stations and never inside the yacht
- all charging stations to be unplugged when guests go to bed

## Cabin Orientations

A staff member will show you to your cabin and provide an orientation including:-

- Pointing out smoke detectors
- Showing main escape route and how to reach muster station
- Showing secondary escape route including emergency escape hatch
- Showing two closest fire extinguishers and how to use them

These safety systems will also be presented during the welcome and boat safety briefing

## Life Jackets

- Every cabin has two lifejackets
- Enough lifejackets for everyone at the muster station - do not return to your cabin

## Safety Comes First

If anything feels wrong  
**DON'T WAIT**  
Tell a member of staff immediately

## Night Safety Watch

Night Safety Watch is a staff member or on duty night watchman. They will be awake performing duties while others sleep usually 10pm - 6am

- If the yacht is moving at night, then several staff members are up driving and walking around to check systems continuously throughout the yacht.

Night safety duties include

- Conducting regular rounds throughout the yacht
- Monitoring yacht systems and anchorage
- Ensuring all charging stations are unplugged
- Ensuring all emergency exits are accessible.

## Smoking

- Smoking is only allowed in the designated area - at the bow

## Smoke Detectors

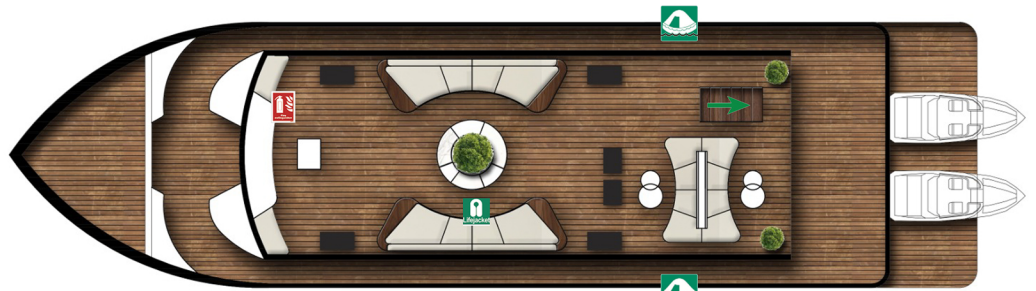
Smoke detectors are tested and certified regularly including:-

- Power source check
- Batteries replaced (for battery units)
- Tested with canned smoke

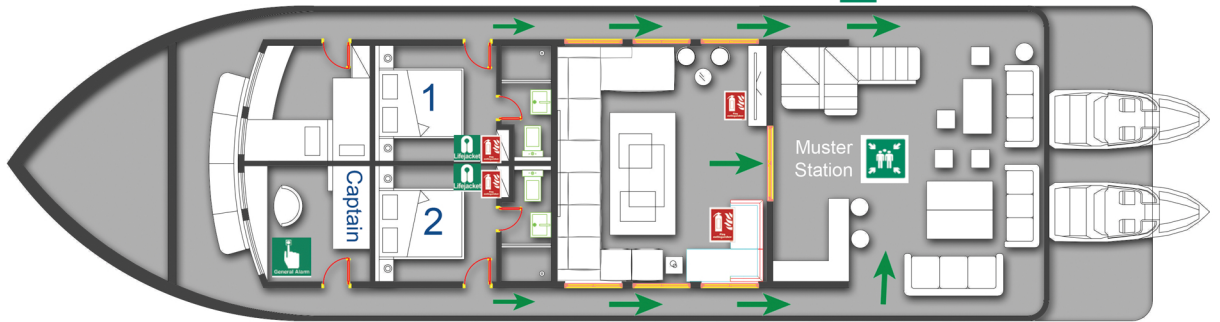
Also pre trip all smoke detectors are set off to test audible alarms.

# Evacuation Plan - Bella 4

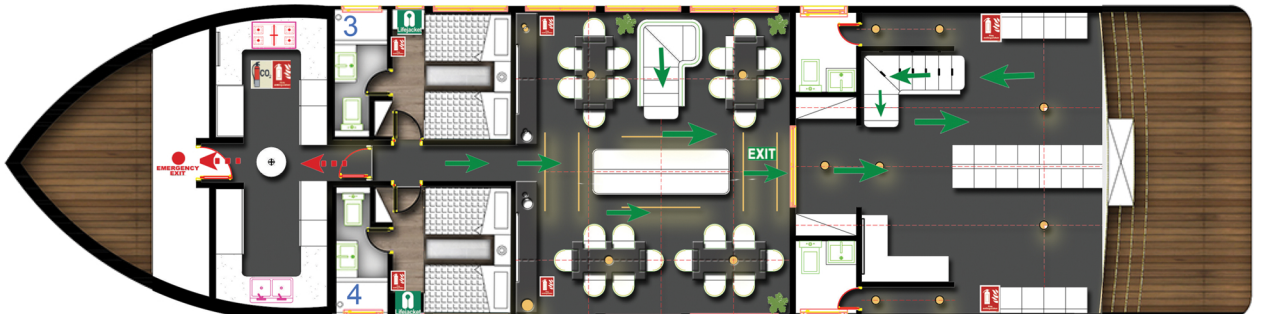
Top Deck



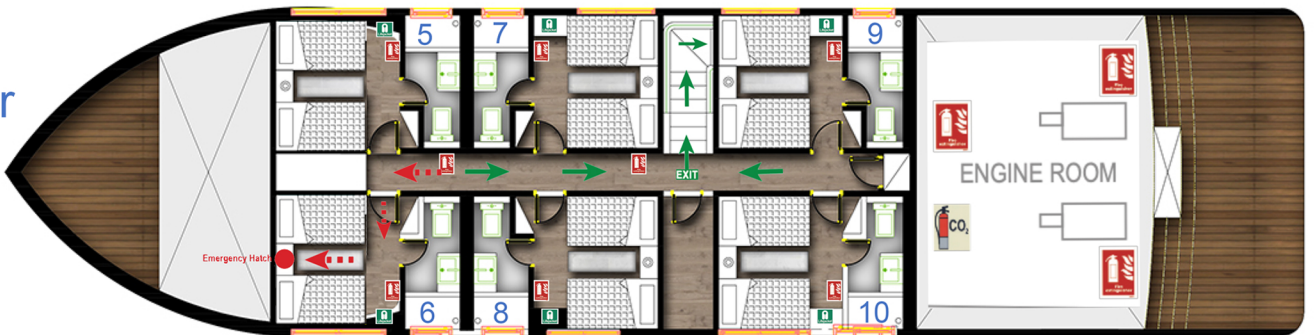
Upper Deck



Main Deck



Lower Deck



## General alarm signal

In the event of an emergency, the following signal will sound on the ships horn  
Seven short blasts,  
followed by one long blast

## Action on hearing alarm

Proceed to Muster station main deck  
Follow instructions from staff  
Do NOT return to your cabin  
If primary exit is blocked use secondary exit as marked

-  **Muster Station**
-  **Life Raft**
-  **Life Jackets**
-  **General Alarm**
-  **Fire Extinguisher**
-  **CO2 Fire Extinguisher**
-  **Fire Hose**

 **Primary Exit**

 **Secondary Exit**

 **Emergency Hatch**